

10. Stretching white gumpaste and write the brand of the shoe in this case (Jimmy Choo) with gourmet writer pen, mark the edges with [stitching tool](#).





11. Glue into the shoe use paper towels for support let dry for 1 hour



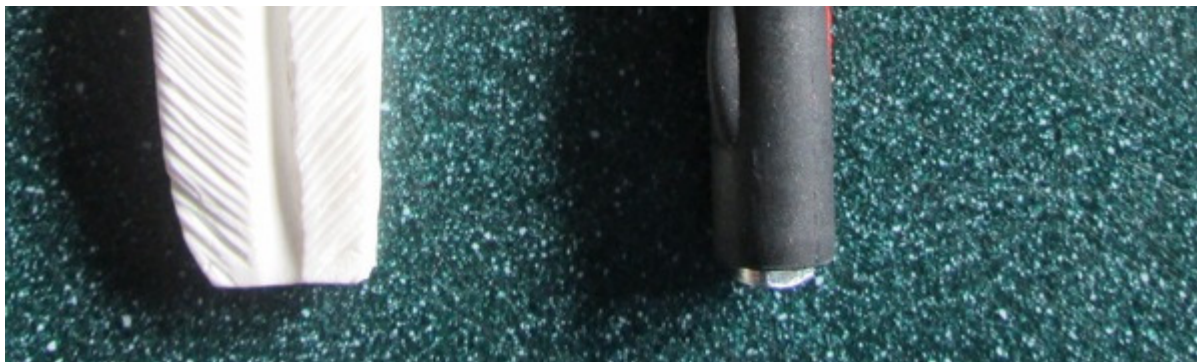


12. Cut modeling paste 3 1/2" long.



13. Silicone mold, exacto knife, gumpaste





14.



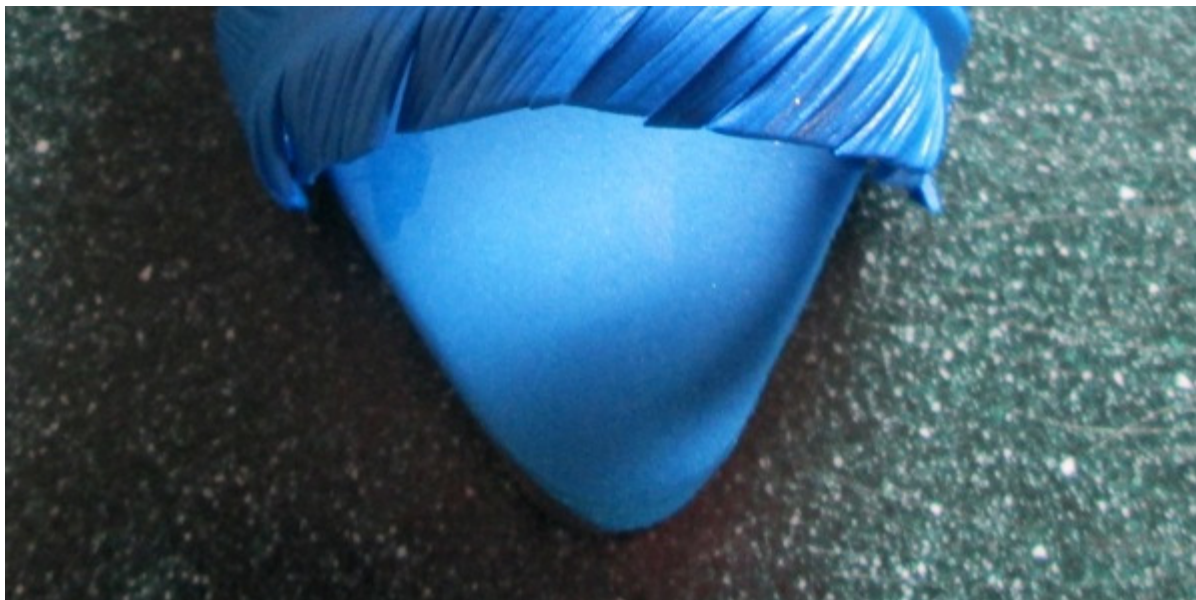


15. Stretch modeling paste very thin and mark with the feather silicone give the shape with a scissor and make created feather effect using exacto knife cutting an angle around the feather



16. Glue to the shoe





17. Do the same procedure, but with a 4 1/2 inch long feather veiner.





18. Feather #3 a 5 1/2 inch long, feather #4 6 1/2 long. And the same procedure, using the big feather silicone mold, for the overlapping feather cut 7 inch long.





19. Glue the feather to the shoe let dry for 1 day.





AND.... HERE is the finished sugar shoe!! STUNNING to say the least! Thank you so much Iris for sharing this with all of us!





If you would like to submit a tutorial for our newsletter, please zip me a line and let me know what you have in mind. We will give you a \$25.00 gift certificate for your efforts. It's easy, if you are already doing a project, just take step by steps and then fill in the wording. Jennifer@SugarDelites.com